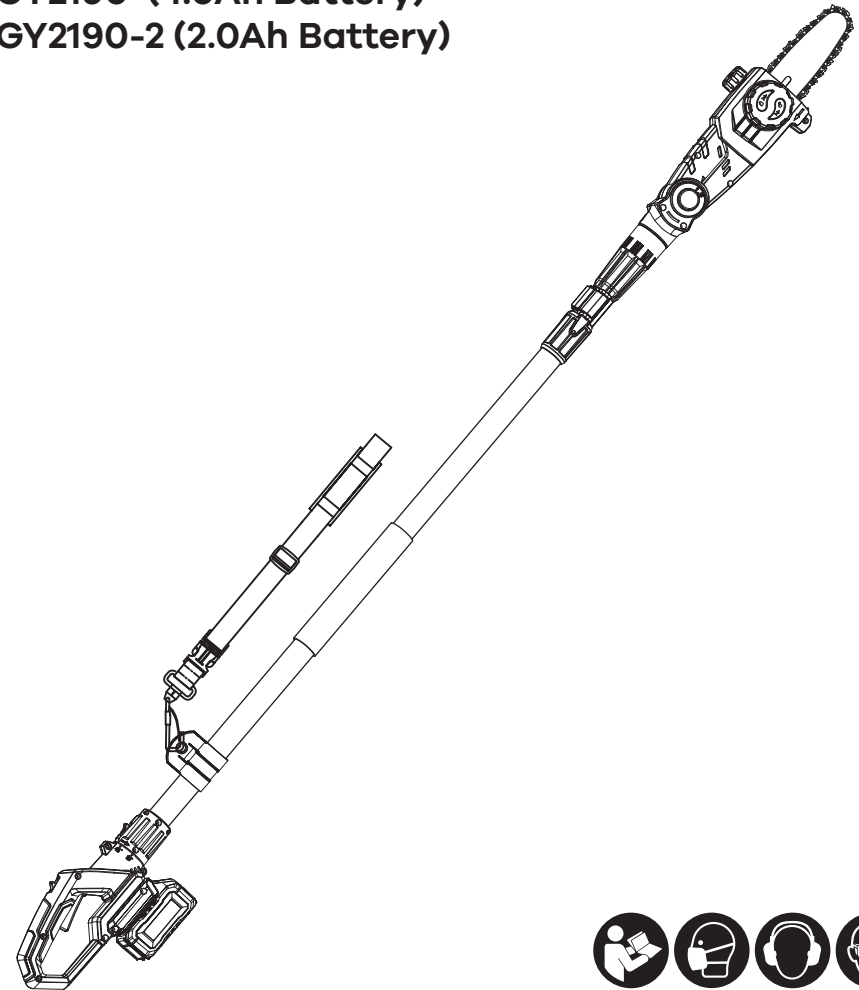


ENHULK

20V Cordless Pole Saw
GY2190 (4.0Ah Battery)
GY2190-2 (2.0Ah Battery)



SYVIO TECHNOLOGY.CO.,LIMITED
Room A, 8/F,Kwok Cheung Building, 635-637
Shanghai Street, Mong Kok, Hong Kong
0086-133-2298-6467
service@enhulktools.com



Please read carefully before use
Original instruction Manual

General Power Tool Safety Warnings

⚠ WARNING Read all safety warnings and all instructions. Failure to follow all

instructions listed below may result in electric shock, fire and/or serious injury.

Save all warnings and instructions for future reference. The term "power tool" in the warnings refers to your mainsoperated (corded) power tool or battery-operated (cordless) power tool.

Work area safety

- **Keep work area clean and well lit.** Cluttered or dark areas invite accidents.
- **Do not operate power tools in explosive atmospheres, such as in the presence of flammable liquids, gases or dust.** Power tools create sparks which may ignite the dust or fumes.
- **Keep children and bystanders away while operating a power tool.** Distractions can cause you to lose control.

Electrical safety

- **Power tool plugs must match the outlet. Never modify the plug in any way. Do not use any adapter plugs with earthed (grounded) power tools.** Unmodified plugs and matching outlets will reduce risk of electric shock.
- **Avoid body contact with earthed or grounded surfaces, such as pipes, radiators, ranges and refrigerators.** There is an increased risk of electric shock if your body is earthed or grounded.
- **Do not expose power tools to rain or wet conditions.** Water entering a power tool will increase the risk of electric shock.
- **Do not abuse the cord. Never use the cord for carrying, pulling or unplugging the power tool. Keep cord away from heat, oil, sharp edges or moving parts.** Damaged or entangled cords increase the risk of electric shock.
- **When operating a power tool outdoors, use an extension cord suitable for outdoor use.** Use of a cord suitable for outdoor use reduces the risk of electric shock.
- **If operating a power tool in a damp location is unavoidable, use a residual current device (RCD) protected supply.** Use of an RCD reduces the risk of electric shock.

Personal safety

- **Stay alert, watch what you are doing and use common sense when operating a power tool. Do not use a power tool while you are tired or under the influence of drugs, alcohol or medication. A moment of inattention while operating power tools may result in serious personal injury.**

- **Use personal protective equipment. Always wear eye protection.** Protective equipment such as a dust mask, nonskid safety shoes, hard hat or hearing protection used for appropriate conditions will reduce personal injuries.
- **Prevent unintentional starting. Ensure the switch is in the off-position before connecting to power source and/or battery pack, picking up or carrying the tool.** Carrying power tools with your finger on the switch or energising power tools that have the switch on invites accidents.
- **Remove any adjusting key or wrench before turning the power tool on.** A wrench or a key left attached to a rotating part of the power tool may result in personal injury.
- **Do not overreach. Keep proper footing and balance at all times.** This enables better control of the power tool in unexpected situations.
- **Dress properly. Do not wear loose clothing or jewellery. Keep your hair, clothing and gloves away from moving parts.** Loose clothes, jewellery or long hair can be caught in moving parts.
- **If devices are provided for the connection of dust extraction and collection facilities, ensure these are connected and properly used.** Use of dust collection can reduce dust related hazards.

Power tool use and care

- **Do not force the power tool. Use the correct power tool for your application.** The correct power tool will do the job better and safer at the rate for which it was designed.
- **Do not use the power tool if the switch does not turn it on and off.** Any power tool that cannot be controlled with the switch is dangerous and must be repaired.
- **Disconnect the plug from the power source and/or remove the battery pack, if detachable, from the power tool before making any adjustments, changing accessories, or storing power tools.** Such preventive safety measures reduce the risk of starting the power tool accidentally.
- **Store idle power tools out of the reach of children and do not allow persons unfamiliar with the power tool or these instructions to operate the power tool.** Power tools are dangerous in the hands of untrained users.
- **Maintain power tools and accessories. Check for misalignment or binding of moving parts, breakage of parts and any other condition that may affect the power tool's operation. If damaged, have the power tool repaired before use.** Many accidents are caused by poorly maintained power tools.
- **Keep cutting tools sharp and clean.** Properly maintained cutting tools with sharp cutting edges are less likely to bind and are easier to control.

Safety instruction

- Use the power tool, accessories and tool bits etc. in accordance with these instructions, taking into account the working conditions and the work to be performed. Use of the power tool for operations different from those intended could result in a hazardous situation.

Battery tool use and care

- **Recharge only with the charger specified by the manufacturer.** A charger that is suitable for one type of battery pack may create a risk of fire when used with another battery pack.
- **Use power tools only with specifically designated battery packs.** Use of any other battery packs may create a risk of injury and fire.
- **When battery pack is not in use, keep it away from other metal objects, like paper clips, coins, keys, nails, screws or other small metal objects,**

that can make a connection from one terminal to another.

- **Shorting the battery terminals together may cause burns or a fire.**
- **Under abusive conditions, liquid may be ejected from the battery; avoid contact. If contact accidentally occurs, flush with water. If liquid contacts eyes, additionally seek medical help.** Liquid ejected from the battery may cause irritation or burns.

Service

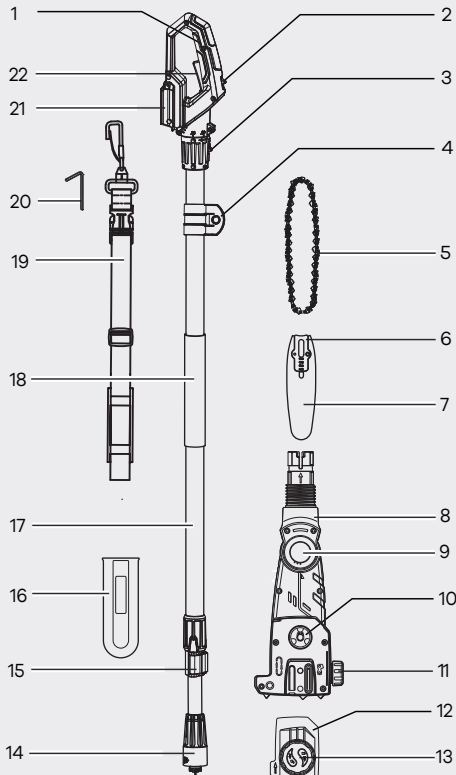
- **Have your power tool serviced by a qualified repair person using only identical replacement parts.** This will ensure that the safety of the power tool is maintained

Symbols

	To reduce the risk of injury, user must read instruction manual before use. Observe all safety notes.
	Warning
	Remove battery from the socket before carrying out any adjustment servicing or maintenance.
	Always use eye/ear protection, and wear a safety helmet.
	Wear dust mask
	Prevent the risk of personal injury due to electric shock.
	Wear protective gloves

	Wear protective footwear
	You must wear tight-fitting clothing with cut protection inserts for your feet, legs, hands and underarms
	Do not expose to rain
	Risk of electric shock! Maintain a distance of at least 10 m from live cables.
	Conforms to all relevant European directives
	Waste electrical products must not be disposed of with household waste. Please recycle where facilities exist. Check with your local authorities or retailer for recycling advice.

Product Description and Specifications



1. Handle
2. Release Button
3. Locking Button of Handle
4. Shoulder Strap Hook
5. Saw Chain
6. Chasing
7. Guide Bar
8. Saw Chain Body
9. Locking Device
10. Sprocket
11. Oil Tank Cap
12. Sprocket Cover
13. SDS Fastener
14. Screw Sleeve
15. Clip

16. Protective Cover
17. Telescopic Tube
18. Sponge Cover
19. Shoulder Strap
22. Allen Key
21. Battery Pins
20. On/Off Switch

Accessories shown or described are not included with the product as standard. You can find the complete selection of accessories in our accessories range.

Technical Data

Cordless pole pruner

Article number	GY2190
Voltage	DC 20V
Cutting length	8in 185mm
Chain speed	19.7ft/s 6m/s
Adjustable length	6.2-8.6ft 1.9-2.65m
Oil tank Capacity	2.37oz.av 70ml
Sound pressure level L_{pA}	99.5dB (A)
Guaranteed sound power level L_{WA}	103dB (A)

Operating instructions

Assembly of chain and bar

⚠ Risk of injury!

If parts are missing or damaged, the device must not be operated until everything has been correctly replaced. Failure to follow this warning could result in serious personal injury.

- Make sure that the battery pack is removed from the device.

⚠ WARNING!

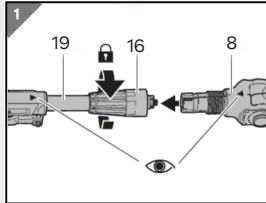
- Always wear protective gloves when servicing the chain.

Mount the saw chain body

1. Release the clip on the tube and pull the inner hexagonal pole out from the front tube about 20 cm and lock the clip again.
2. Insert the saw chain body (8) into the holder on the inner hexagonal pole. Make sure that the saw chain body is correctly positioned in relation to the handle and the **two arrows** on the saw chain body and the hexagonal pole must face each other.

⚠ WARNING!

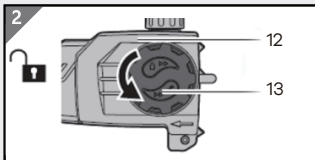
If **two arrows** do not match, the electrical connection cannot be connected, and the machine cannot work.



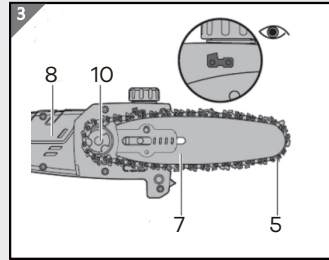
3. Tighten the screw sleeve (16) clockwise to tighten the saw chain body to the hexagonal pole, the saw chain body is mounted.

Mount the saw chain

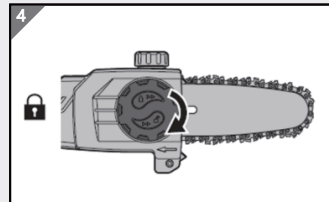
1. Unscrew the SDS fastener (13) counterclockwise.
2. Remove the sprocket cover (12).



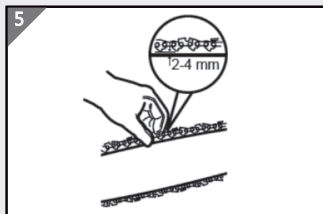
3. Place the saw chain (5) in the groove of the bar (7) so that the alignment of the chain links corresponds to the direction of rotation symbol printed on the device.
4. Place the bar & chain together on the saw chain body (8), fit the hole of bar into the knob and place the saw chain around the chain sprocket (10).



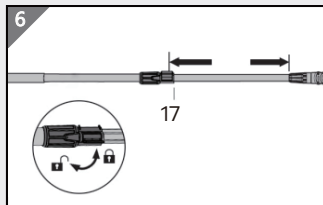
5. Put on the sprocket cover, pull the bar forwards and screw the SDS fastener clockwise until hear "click" and the chain sprocket cover is completely in contact with the bar.



6. Check the chain tension by below photo, if too tight, release SDS fastener a little.



Adjust telescopic tube



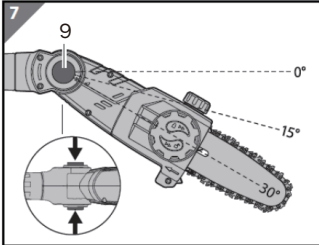
1. Release the clip (17) on the tube.
2. Pull the inner hexagonal pole out from the front tube as far as is necessary for your work or as far as the stop.
3. Lock the clip (17).

Operating instructions

Adjust the angle of inclination

In order to enable an optimal working position, the saw chain body (8) can be inclined 3 angle: 0°, 15° and 30°.

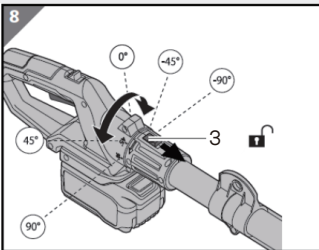
1. Press and hold the locking device of the inclination angle (9).
2. Set the desired angle of inclination.
3. Release the lock. Make sure that the saw chain body clicks into place. The angle of inclination is set.



Adjust the handle angle

To enable an optimal working position, the handle (1) can be rotated $\pm 45^\circ$ & $\pm 90^\circ$ to the right and left.

1. Push and hold the locking button of the handle (3).
2. Set the desired angle.
3. Release the locking button on the handle. Make sure that the handle clicks into place.



Insert / replace battery

Read the operating instructions for the battery before inserting it.

⚠ Caution

Risk of fire and explosion due to polarity reversal or short circuit.

- Only use original batteries or proved by Enhulk.
- Only use undamaged batteries.

Remove the battery

Read the operating instructions for the battery before inserting it.

1. Press and hold the battery release button.
2. Pull the battery out of the battery holder. If the battery cannot be removed easily, the battery release button was not pressed enough.

Press the battery release button more firmly.

Insert the battery

1. To insert the battery, slide the battery into the battery holder. You will hear a "click" when the battery lock engages.
2. Check that the battery is firmly seated.

⚠ Caution

Long periods of time in the immediate vicinity of the running device can lead to hearing damage.

- Wear ear protection.
- A certain amount of noise from this device cannot be avoided. Postpone noisy work to approved and specified times. If necessary, keep to rest periods and limit the working time to the bare minimum. For your personal protection and the protection of people in the vicinity, suitable ear protection must be worn.

⚠ WARNING

Risk of injury from running saw chain.

- Keep your hands away.
- Never use the machine with a damaged cover or protective device or without a cover or protective device.
- Remove the replaceable battery before all adjustment, cleaning and maintenance work on the device.
- Wait until all rotating parts have come to a standstill and the device has cooled down. **Before using the device, inspect the work area.** Remove hard objects such as stones, broken glass, wire, etc. that could be thrown away, ricocheted, or otherwise cause injury or damage while the device is in use.
- **Never use this device if the correct equipment is not attached service.**

The device must not be used if it is damaged or the safety devices are defective. Replace worn and damaged parts.

Before each start-up, check all screw and connections as well as protective devices for tightness and correct fit and whether all moving parts move easily.

It is strictly forbidden to dismantle or modify the protective devices on the machine or to alienate them from the intended purpose or to attach third-party protective devices.

If the device begins to vibrate abnormally, switch off the machine and investigate the cause immediately. Vibrations are generally a warning of a malfunction.

If the device is blocked, switch it off immediately and then remove the object.

Store the device dry and protected from frost.

Keep unused power tools out of the reach of children. Do not allow people to use the power tool who are not familiar with it or who have not read

Operating instructions

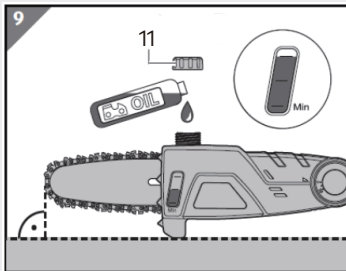
these instructions.

Add chain oil

Risk of damage!

Running the machine without lubrication can damage the bar and saw chain.

- Never work without chain lubrication.
 - It is therefore essential to check the oil level on the level indicator regularly and every time you start working with the device.
 - Make sure that the container is always at least $\frac{1}{4}$ full so that there is enough oil for the respective project.
1. Place the device on a level surface.
 2. Unscrew the cap of the chain oil tank (11) in an anti-clockwise direction.
 3. Fill the chain oil into the chain oil tank until the level indicator shows the level shown. Make sure that no dirt gets into the oil tank.
 4. Close the oil tank by turning the lid clockwise screw tight. The chain oil is filled.

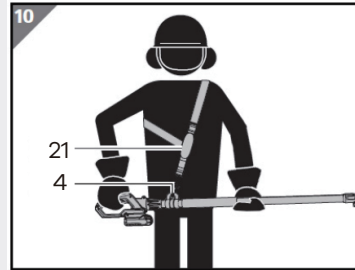


Use a shoulder strap

When using the device, always wear the carrying strap (21) so that you can work as fatigue-free as possible.

1. Put the strap on so that it runs over your shoulder and crosses your chest and back.
 2. Fasten the shoulder strap with the hook of the carrying strap (21) on the fastening eyelet for the carrying strap (4).
 3. Adjust the strap length of the shoulder strap so that the attachment eye of the shoulder strap is at hip height.
 4. To change the belt position on the device, slightly unscrew the fastening screws of the fastening eyelet of the carrying belt in an anti-clockwise direction by Allen key (22).
- Move the fastening eyelet of the shoulder strap to the desired position.
 - Tighten the fastening screws of the fastening eyelet in a clockwise direction.
- Check the connect of the shoulder strap before and after each use for damage and correct function. In the event of functional difficulties or damage, have it checked immediately by

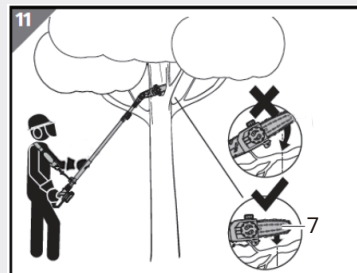
authorized specialists and, if necessary, replaced.



Work instructions

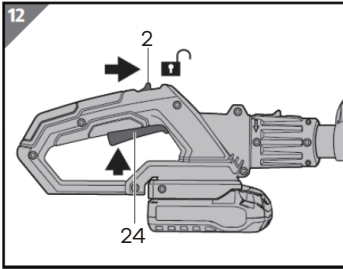
Risk of damage!

- Hold the device with both hands, with your thumb and fingers firmly gripping the handles. - Bring your body and arms in a position where you can withstand the kickback forces.
- When working on a slope, always stand above or to the side of the branch you are sawing.
- First saw off the lower branches of the tree so that they can fall down unhindered.
- Do not saw the bulging branches to make it easier for the tree to heal.
- Sawing off small branches: Place the stop surface lightly on the branch to avoid jerky movements of the device when starting the cut. Guide the bar (7) through the branch from top to bottom, applying slight pressure.
- Change your work position regularly. When changing the working position, watch out for branches that are lying on the ground and kicking back.

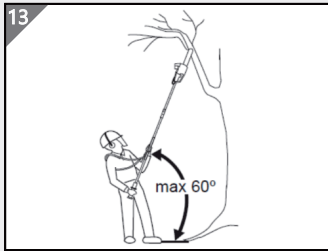


To switch on and off

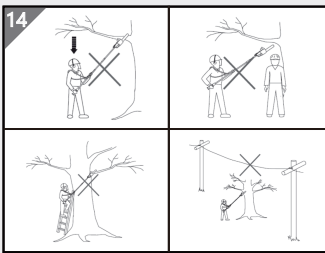
Push the release button (2) completely forward and press the on / off switch (24) to switch on the machine; release the both to switch off the machine.



Always make sure the cutting angle is Max 60°.



- Do not cut any branch above your head to prevent branch falling on your head.
- Do not do any cut above other persons to prevent accident.
- Do not cut in ladder.
- Do not cut near electrical wire.



Remove blockages

⚠ WARNINGS

Risk of injury! Wear suitable gloves to avoid injury. Unintentional switching on can lead to injuries.

- Make sure that the device is switched off.
- Disconnect the battery from the device.

Remove blockages.

1. Make sure the device is turned off.
2. Remove any jammed material from the saw chain (5) and blade (7).

Test

⚠ WARNINGS

Risk of injury from sharp knives.

- Use protective gloves. Before each use, check:
 - The device for damage.
 - The controls for damage.
 - The accessories are in perfect condition.
 - That the ventilation slots are free and clean.
- Do not use a damaged device or accessory. Have it checked and repaired by the manufacturer or its customer service or a similarly qualified person.

Cleaning and maintenance

Before and after each use, check the product and accessories (or attachments) for wear and damage. If required, exchange them for new ones as described in this instruction manual.

Sprocket wheel

1. Clean the sprocket wheel.
2. Using a disposable lube gun, insert the needle nose into the lubrication hole and inject grease until it appears at the outside edge of the sprocket wheel.
3. Rotate the saw chain. Repeat the lubrication procedure until the entire sprocket wheel has been greased.

Guide bar and saw chain

1. Disassemble the guide bar and saw chain in reverse order from assembly.
2. Check the oiling port for clogging and clean if necessary to ensure proper lubrication of the guide bar and saw chain during operation. Use a soft wire small enough to insert into the oil discharge hole.
3. Check the drive sprocket. If it is worn or damaged due to strain, have it replaced by an authorized service centre or a similarly qualified person.
4. Clear residue from the rails and holes on the guide bar using a screwdriver, putty knife, wire brush or other similar tool. This keeps the lubrication oil passages open to provide proper lubrication to the guide bar and saw chain.
5. Check the guide bar 'rail' for wear: Hold a ruler (straight edge) against the side of the guide bar and 'cutter side plates'. If there is a gap between the ruler and guide bar the guide bar 'rail' is normal. If there is no gap (ruler flush against the side of the guide bar) the guide bar 'rail' is worn and needs to be replaced with a new one of the same type.
6. Check the saw chain for possible wear and damages. Replace it with a new one if required. Experienced users can sharpen a dull saw chain.
7. Refit the saw chain and the guide bar as described above.

Operating instructions/Maintenance and transportation

Transportation and Storage

Switch the product off and remove the battery packs. Empty the lubrication oil tank.

Transportation

1. Disassemble the product and re-pack to original package.
2. Protect the product from any heavy impact or strong vibrations which may occur during transportation in vehicles.
4. Secure the product to prevent it from slipping or falling over.

Storage

1. Clean the product as described above.
2. Store the product and its accessories in a dark, dry, frost-free, well-ventilated place.
3. Always store the product in a place that is inaccessible to children. The ideal storage temperature is between 10°C and 30°C.
4. We recommend using the original package for storage or covering the product with a suitable cloth or enclosure to protect it against dust.

Troubleshooting

Fault	Cause	Remedy
Product does not start	Battery packs not properly attached	Remove the back and re-fit it properly
	Battery packs discharged	Remove and charge battery packs
	Battery packs damaged	Contact service centre for help
	Other electrical defect to the product	Contact service centre for help
Product does not reach full power	The electrical pin of saw head doesn't connect to tube	Refer to step 1 of "Mount the saw chain head" to assemble
	Battery packs capacity too low	Charge battery packs
	Air vents are blocked	Clean the air vents
Cutting result is unsatisfactory	Chain tension too high	Adjust tension saw chain properly
	Chain tension too loose/high	Tension the saw chain properly
	Dull saw chain	Sharpen or Replace saw chain
	Chain teeth are facing in the wrong direction	Reassemble the chain in correct direction
	Too much force applied	Reduce force
	No lubrication oil in the oil tank	Refill lubrication oil
Product suddenly stops	Oiling port clogged	Clean oiling port
	Battery packs discharged	Remove and charge battery packs
Excessive vibration or noise	Battery packs too hot	Remove battery packs and let them cool down
	Bolts/nuts are loosen	Tighten bolts/nuts
	Dull saw chain	Sharpen or Replace saw chain

Guarantee

Guarantee

Dear Customer,

This equipment is provided with a 2-year guarantee from the date of purchase. In case of defects, you have statutory rights against the seller of the product. These statutory rights are not restricted by our guarantee presented below. Terms of Guarantee the term of the guarantee begins on the date of purchase, please retain the original receipt and it's required as proof of purchase. If a material or manufacturing defect occurs within 2-year of the date of the purchasing, we will repair or replace the product for you free of charge. This guarantee requires the defective equipment and proof of purchase to be presented within the 2-year period with a brief written description of what constitutes the defect and when it occurred. If the defect is covered by our guarantee, you will receive either the repaired product or a new product. No new guarantee period begins on repair or replacement of the product.

Guarantee Period and Statutory Claims for Defects

The guarantee period is not extended by the guarantee service. This also applies for replaced or repaired parts. Any damages and defects already present at the time of purchase must be reported immediately after unpacking.