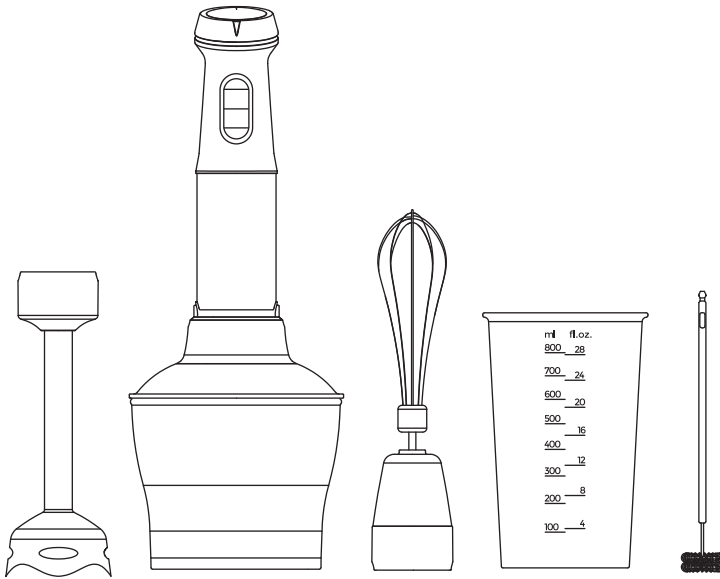


ganiza

HAND BLENDER

User Manual



Model No. : GH10

CONTENT

IMPORTANT SAFETY INSTRUCTIONS	-----	01
KNOWING YOUR BLENDER	-----	02
CLEANING AND MAINTENANCE	-----	07
ENVIRONMENT FRIENDLY DISPOSAL	-----	07
TROUBLESHOOTING GUIDE	-----	08
PACKING LIST	-----	08
WARRANTY POLICY	-----	09

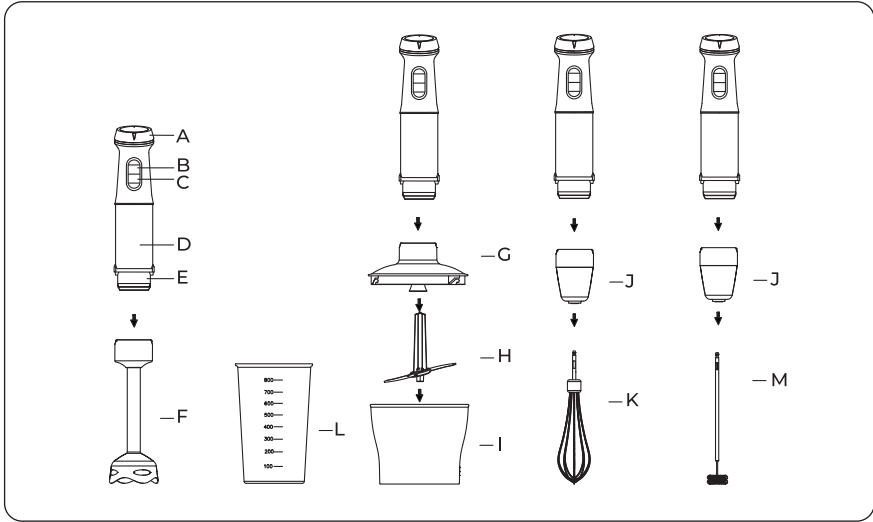
1.IMPORTANT SAFETY INSTRUCTIONS

Before using the electrical appliance, the following basic precautions should always be followed including the following:

- 1.This appliance can be used by children aged from 8 years and above and persons with reduced physical, sensory or mental capabilities or lack of experience and knowledge if they have been given supervision or instruction concerning use of the appliance in a safe way and understand the hazards involved.
2. Children shall not play with the appliance. Cleaning and user maintenance shall not be made by children without supervision.
3. Read all instructions.
4. Before using check that the voltage of wall outlet correspond to the one shown on the rating plate.
5. Do not operate any appliance with a damaged cord or plug or after the appliance malfunctions, or is dropped or damaged in any manner. Return appliance to the nearest authorized service facility for examination, repair or electrical or mechanical adjustment.
6. If the supply cord is damaged it must be replaced by the manufacturer or a authorized service agent or a qualified technician in order to avoid a hazard.
7. Unplug from outlet when not in use, before putting on or taking off parts, and before cleaning.
8. Do not let cord hang over edge of table or hot surface.
9. Do not immerse upper part of blender into water as this would give rise to electric shock.
10. Close supervision is necessary when your appliance is being used near children or infirm persons.
11. Avoid contacting moving parts.
12. Keep hands and utensils out of container while blending to reduce the risk of severe injury to persons or damage to the blender. A scraper may be used but must be used only when the blender is not running.
- 13.The appliance cannot be used for chopping ice or blending hard and dry substance, otherwise the blade could be blunted.
14. To reduce the risk of injury, never place cutting blade on base without first putting bowl properly in place.
15. Be sure chopper lid is securely locked in place before operating appliance.
16. The use of accessory not recommended by the manufacturer may cause injuries to persons.
17. Do not operate the appliance for other than its intended use.
18. This appliance is not intended for use by persons (including children) with reduced physical, sensory or mental capabilities, or lack of experience and knowledge, unless they have been given supervision or instruction concerning use of the appliances by a person responsible for their safety.
19. Children should be supervised to ensure that they do not play with the appliance.
20. Do not use outdoors.
- 21.Save these instructions.
- 22.Avoid to potential injury from misuse.
23. Always disconnect the blender from the supply if it is left unattended and before assembling, disassembling or cleaning;
24. Do not allow children to use the blender without supervision.
25. Switch off the appliance and disconnect from supply before changing accessories or approaching parts that move in use.
26. Care shall be taken when handling the sharp cutting blades, emptying the bowl and during cleaning.

2.KNOWING YOUR HAND BLENDER

HAND BLENDER



A. Speed Control
B. Power Button
C. TURBO Button
D. Mainhousing

E. Button
F. Blender Stick
G. Chopper Bowl lid
H. Chopper Blade

I. Chopper Bowl
J. Whisk Holder
K. Whisk
L. Measuring Cup
M. Bubble Stick

GETTING STARTED

1. Remove all the packaging materials, stickers and labels from the hand Blender
2. Take out the hand blender and clean all the accessories except the main machine with warm or soapy water (note: the main machine with power cord cannot be rinsed with water).
3. After all accessories have dried naturally, store all accessories and the main unit on a dry and stable kitchen countertop or kitchen locker (note: keep out of reach of children or pets).

Note:

This product must be placed in a dry and stable place that is not easy to knock, so as to avoid breakage. For normal use, there must be air circulation around the product. Keep this product away from children or pets. Please keep the environment clean to prevent cockroaches and other reptiles from entering the cavity.

1. Do not put the product on the unstable table, or it may be broken. Please maintain it regularly. Please avoid food residue residue on the product.
2. Please do not place the product in a place with high temperature and humidity, such as a gas stove, a live area or beside a sink, etc.
3. All accessories of this product must be placed flat. The host with power cord can be placed flat in the stable storage cabinet or hung on the stable wall.
4. If the indoor humidity is too high, this product cannot be used.
5. This product is equipped with a blade. Please put it in a safe place to avoid falling or scratching.

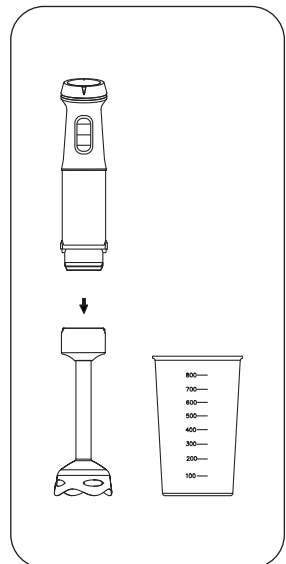
KNOW YOUR BLENDER (IT IS SUITABLE FOR BLENDING VEGETABLE AND FRUIT)

Each operation lasts a maximum of 1 minute. After one minute of use, the machine must stop and rest for 30 seconds. After 5 cycles, the machine must be completely cooled before it can continue to be used (cooling time is about 30 minutes). The max capacity is 700mL, is ideal for taking measurements and preparing small quantities of processed food.

1. Insert the motor unit into the hole of the detachable shaft until you hear a click. To disassemble, just press the release button on motor unit.
2. Simply plug the hand-held blender to power outlet.

3. Press the button to switch at the same time, you can dial the variable speed switch to select the desired speed setting, from low to high.
4. To stop the hand-held blender by releasing Push button switch.

5. For blending stick, appliance are operated with the bowl filled to its maximum indicated level with a mixture comprising two parts by mass of soaked carrots and three parts water.



KNOW YOUR ACCSSORY-CHOPPER (USING FOR CHOPPI NG MEAT AND MAKING GARLIC PASTE)

Each operation lasts a maximum of 1 minute. After one minute of use, the machine must stop and rest for 30 seconds. After 5 cycles, the machine must be completely cooled before it can continue to be used (cooling time is about 30 minutes).

1. Place the chopper bowl on a clean, level surface.
2. Assemble the stainless chopping blade into the chopper bowl, as shown in Fig.

3. Place food into the chopper bowl.

Note: remove the bone of the meat, cut small piece, then place the meat into bowl, the max quantity of meat can't exceed 200g in every blending.

4. Attach the lid onto the chopper bowl, make sure the tuber on the inside wall of bowl aligns with the groove of lid, then put down the lid and turn it in clockwise direction until it locks into position. To detach the lid, turn in adverse direction.

5. Insert the motor unit into the hole of the chopper lid, and until you hear a click. To disassemble, just press the release button on motor unit.

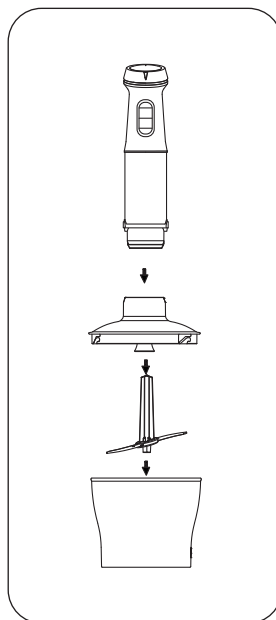
6. Press the button to switch at the same time, you can dial the variable speed switch to select the desired speed setting, from low to high.

7. To stop the hand-held blender by releasing Push button switch .

Caution:

-To reduce the risk of injury, never place cutting blade on base without first putting bowl properly in place.

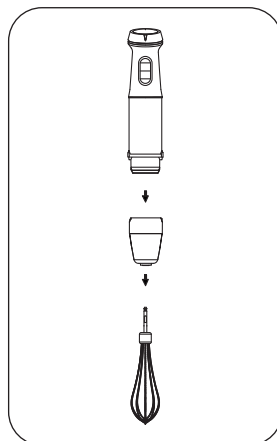
-Be sure chopper lid is securely locked in place before operating appliance.



KNOW YOUR ACCESSORY-BEATER (FOR MIXING EGG WHITE)

Each operation lasts a maximum of 1 minute. After one minute of use, the machine must stop and rest for 30 seconds. After 5 cycles, the machine must be completely cooled before it can continue to be used (cooling time is about 30 minutes).

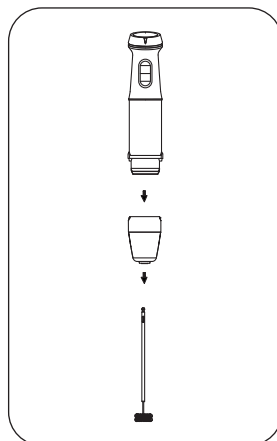
1. Insert the motor unit into the hole of the egg white beater until you hear a click. To disassemble, just press the release button on motor unit.
2. Simply plug the hand-held blender to power outlet.
3. Place egg white into the cup, don't whisk more than 6 eggs .
4. Press the button to switch at the same time, you can dial the variable speed switch to select the desired speed setting, from low to high.
5. To stop the hand-held blender by releasing Push button switch .



KNOW YOUR ACCESSORY-MILK FROTHER (FOR MIXING MILK)

Each operation lasts a maximum of 1 minute. After one minute of use, the machine must stop and rest for 30 seconds. After 5 cycles, the machine must be completely cooled before it can continue to be used (cooling time is about 30 minutes).

1. Insert the motor unit into the hole of the Milk Frother until you hear a click. To disassemble, just press the release button on motor unit.
2. Simply plug the hand blender to power outlet.
3. Place milk into the cup, don't whisk more than 200ml.
4. Press the button to switch at the same time, you can dial the variable speed switch to select the desired speed setting, from low to high.
5. To stop the hand blender by releasing Push button switch .



USING YOUR HAND BLENDER

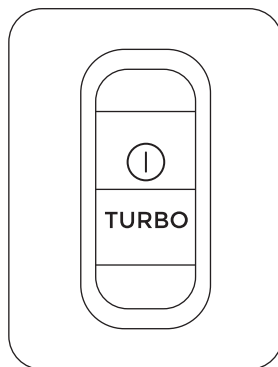
POWERING ON

Step 1: Insert the hand blender into the socket. When the switch is not pressed, the machine will be in the state of power failure. (Note: Do not touch the blade end or point the blade at others after power-on)

Step 2: According to their own needs, choose different function keys

Step 3: If you select TURBO, press the corresponding key

Step 4: If you select the Start button, you can also adjust the speed according to the speed ring . There are 15 speeds to choose from.



Note:

1. When the Start button or TURBO button is pressed, the blue indicator light will be on the position of the key and the speed control ring, and the product will start synchronously. When you release the start button or the TURBO button, the product will be powered off, the indicator will be off, and the product will stop working simultaneously.

2.The product plug is on the socket, please do not reach the blade position or the rotating working position of the machine; Prevent injury.

3.You can choose to replace different accessories to achieve different functions and needs.

4.Before replacing the parts, pull out the plug to completely power off the product to avoid injury caused by touching the switch by mistake.

5.Do not allow children to use this tool to avoid injury.

6.If you need to replace the spare parts, press the two buttons at the bottom of the host at the same time, then remove the spare parts, and then replace the spare parts you need.

7.The Egg beater and Milk Frother share the same connector, which can be replaced by inserting and pulling out. Please note that the insertion requires slight force to clamp the metal part to the connector.

8.Each operation lasts a maximum of 1 minute. After one minute of use, the machine must stop and rest for 30 seconds. After 5 cycles, the machine must be completely cooled before it can continue to be used (cooling time is about 30 minutes).

9.The product may heat up while working, which is a normal phenomenon and not a product fault. Please stop running the product when it is overheated and wait for it to cool completely before using it to continue working.

10.During use, ingredients may get stuck on the blade. When similar phenomenon occurs, please unplug the power socket, make the machine completely power off, and then take out the stuck ingredients. Please be careful not to get hurt in the process.

Warning

Precautions, please read all the contents before using the machine for the first time.

After-sales

It contains after-sales service terms and after-sales emails

Tip:

1. You are happy, we are happy! If you have some good suggestions, you can let me know through our mailbox.
2. Our dedicated and friendly customer care team will work at full stretch to put a smile back on your face and restore your confidence in Ganiza.

3.CLEANING AND MAINTENANCE

IMPORTANT:

1. Unplug the appliance and remove the detachable stem.

Note: Do not immerse the detachable stem of the blender in water because overtime the lubrication on the bearings may wash away.

2. Wash the detachable stem under running water, without the use of abrasive cleaner or detergents. After finishing cleaning the detachable stem, place it upright so that any water which may have got in, can drain out. The stem is dishwashing safe component.
3. Wash the cup, bowl, beater and blade in warm soapy water. The bowl and the beater are not recommended to place in dishwashing machine as the plastic component deteriorates through prolonged use of dishwasher cleaning.

4. Wipe the motor unit with a damp cloth. Never immerse it in water for cleaning as a electric shock may occur.

5. Dry thoroughly.

Caution: Blades are very sharp, handle with care.

6. Reassemble the blender shaft to motor unit then place it upright in wall bracket or hang it up for saving space.

7. Quick cleaning : Between processing tasks, hold the hand-held blender in the cup half filled with water and turn on for a few seconds.

4.ENVIRONMENT FRIENDLY DISPOSAL

You can help protect the environment!

Please remember to respect the local regulations: hand in the non-working electrical equipments to an appropriate waste disposal center

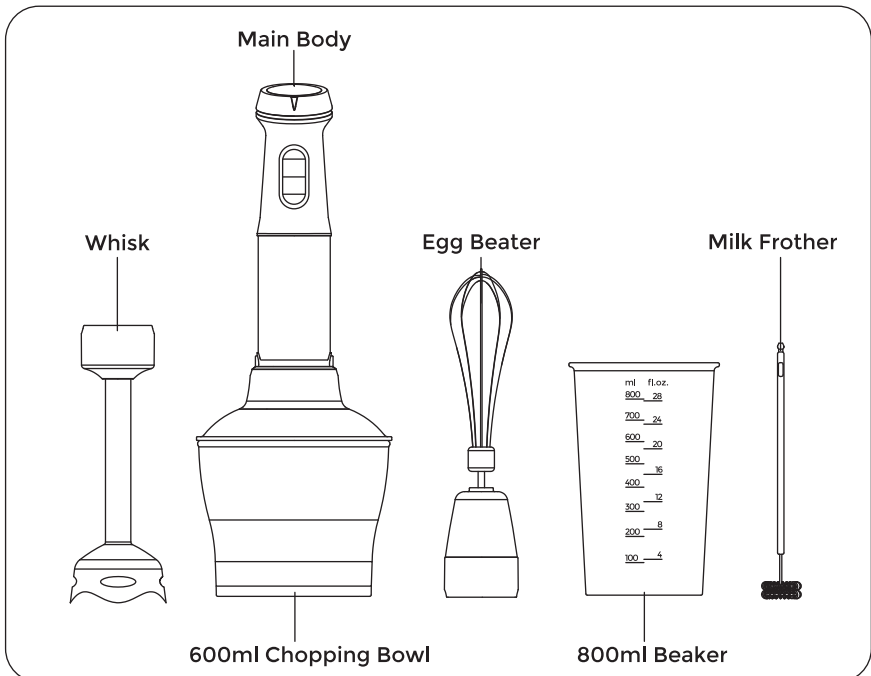


5.TROUBLESHOOTING GUIDE

Fault phenomenon	Cause Analysis	Solution
Product not working	Power not plugged in	Insert the power plug into a grounded outlet
	Motor damage	After-sales maintenance
	Bad power board	After-sales maintenance
Abnormal noise at work	Fittings are not installed in alignment	Reassemble the product
	Motor support fracture	After-sales maintenance
The indicator light is not on when working	Indicator light damage	After-sales maintenance
Speed cannot be adjusted	Speed regulating structure damage	After-sales maintenance

6.PACKING LIST

Hand Blender



7. WARRANTY POLICY

Your appliance has the benefit of our guarantee which covers the product for 12 months from the date of original purchase. This gives you the reassurance that if within that time, your appliance is proven to be defective because of either workmanship or materials, we will at our discretion either repair or replace your appliance. The appliance must be correctly installed, located, and operated in accordance with the instructions contained in the user manual. The guarantor disclaims any liability for accidental or consequential damage.

The Guaranteed conditions

Documentary proof of the original purchase date is provided.

The appliance has been installed and operated correctly and in accordance with our operating and maintenance instructions.

The appliance is used only on the electricity supply on the rating plate.

The appliance has only been used for normal domestic purposes.

The appliance has not been altered, serviced, dismantled or otherwise interfered with by any person.

Any parts removed during repair work or any product that has been replaced become our property.

The guarantee is not transferrable if the product is resold.

The Guarantee does not cover

Accidental damage, misuse, or abuse.

Replacement of any consumable item or accessories.

Repairs or replacements are required as a result of authorized repairs or inexperienced installation that fails to meet the requirements contained in the user guide or instruction book.

Repairs to products used in commercial or non-residential household premises.

After sales service

Please keep your purchase receipt or other proof of purchase in a safe place as you will need to show us this document if your product requires attention within the guarantee periods. Please also record your product details below, which will allow you to access our services more quickly and help us identify your product.

Model number S/N number Purchased from Date of Purchase.

Model Number

LINKZONE TECHNOLOGY CO., LIMITED
ROOM 510 5/F WAYSON COMMERCIAL BUILDING 28
CONNAUGHT RD WEST SHEUNG WAN HK
Email: Service@ganiza.com