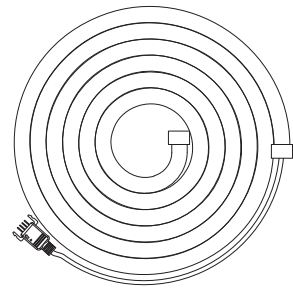


Smart Neon Rope Light  
Operation Manual



Function Introduction



16 million color



APP control



Timing & countdown



Voice control



Dimming



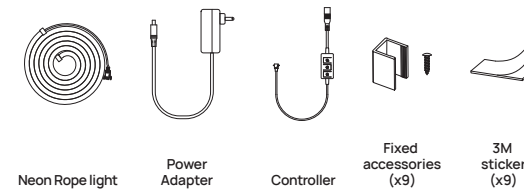
music rhythm

01

Package Item

Item List	Quantity
Controller Box	1 PC
Power Adapter	1 PC
RGB Neon Rope Light	1 Roll
Manual Instruction	1 PC
Fixed accessories	9 PC
3M sticker	9 PC

Led Neon Rope Light Kits



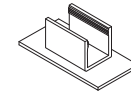
02

Installation

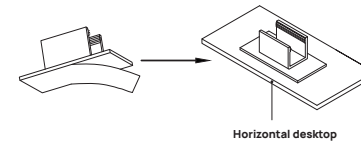
STEP 1:  
Tear one side of 3M sticker release paper



STEP 2:  
Apply 3M sticker to U-shaped accessory

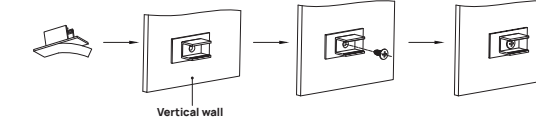


STEP 3:  
① Fix 3M sticker horizontally, tear the release paper on the other side of 3M sticker and stick to the required installation position. Refer to the diagram below:

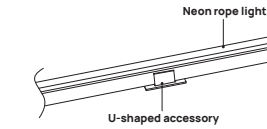


03

② Fix the 3M sticker vertically, stick the release paper on the other side of the 3M sticker to the required installation position, and then use a screwdriver to insert the screw through the hole and fix the U-shaped accessory on the wall. Refer to the diagram below:

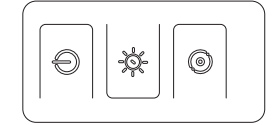


STEP 4:  
Install the neon rope light into the U-shaped accessory



04

Introduction of the Controller



	<ol style="list-style-type: none"> <li>Short press (&lt;1s) on/off key, switch the switch mode, short press once to turn on the light strip, press again to turn off. In the non-reset state, it will memorize the state of the light strip before it was turned off last time.</li> <li>Press and hold the Power button for (&gt;5s) to enter the factory state mode: R-G-B gradient once.</li> </ol>
	<ol style="list-style-type: none"> <li>Long press (&gt;1s) to adjust brightness. 100%-1%-100%.</li> <li>Short press (&lt;1s) to switch in sequence according to the set scene mode.</li> </ol>
	<ol style="list-style-type: none"> <li>Local music rhythm on and rhythm mode switch button, short press (&lt;1s) to turn on the local music rhythm, the default Pop mode.</li> <li>Short press again to cycle the music rhythm mode. Long press (&gt;3s) the switch button to the set scene mode.</li> </ol>

05

Installation Instructions

- After installing the smart neon rope light, power on.
- The rope light will gradually blink R-G-B, and the light will enter the state of distribution network.
- To connect neon rope light to the Internet, download the Aidot APP and follow the APP guidelines.

Quick Start Guide

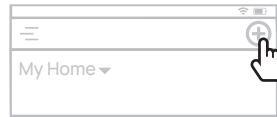
- Scan the QR code below, or search for "AiDot" in App Store or Google Play.



Google, Google Home and Google Play are trademarks of Google LLC.

06

- Create an account and sign in. Tap '+' to add the smart neon rope light.



- Follow the instructions on the App. (Note: Please turn on Bluetooth and location.) For more information about the usage guidelines and FAQs, Please scan the QR code below or visit the website: <https://www.aidot.com/s/000038>.



07

Warning

- This device complies with Part 15 of the FCC Rules. Operation is subject to the following two conditions:
    - This device may not cause harmful interference.
    - This device must accept any interference received, including interference that may cause undesired operation.
- NOTE: The grantee is not responsible for any changes or modifications not expressly approved by the party responsible for compliance. Such modifications or changes could void the user's authority to operate the equipment.
- NOTE: This equipment has been tested and found to comply with the limits for a Class B digital device, pursuant to part 15 of the FCC Rules. These limits are designed to provide reasonable protection against harmful interference in a residential installation. This equipment generates uses and can radiate radio frequency energy and, if not installed and used in accordance with the instructions, may cause harmful interference to radio communications. However, there is no guarantee that

08

interference will not occur in a particular installation. If this equipment does cause harmful interference to radio or television reception, which can be determined by turning the equipment off and on, the user is encouraged to try to correct the interference by one or more of the following measures:

- Reorient or relocate the receiving antenna.
- Increase the separation between the equipment and receiver.
- Connect the equipment into an outlet on a circuit different from that to which the receiver is connected.
- Consult the dealer or an experienced radio/TV

09

Cautions

To avoid personal injury and/or possible product damage, the following cautions must be followed:

- To prevent early lamp failure, lamp should only be installed in operating environments ranging between: -10 C and +40 C (14° F and +104° F).
- Suitable for damp locations.
- Not for use with dimmers.
- Lamp dims via wireless control and will not operate with a dimmer switch.

10

Contact Us

SPRING SUNSHINE TECHNOLOGY CO., LIMITED  
FLAT/RM 01-04, 24/F, FU FAI COMMERCIAL CENTRE, 27 HILLIER STREET, SHEUNG WAN, HK  
Phone: 1-877-770-5727 (Mon.-Fri. 9 to 5 PST)  
[www.linkind.com](http://www.linkind.com)  
[service@linkind.com](mailto:service@linkind.com)  
Made in China  
Manufacturer: Leedarson IoT Technology Inc.  
Address: No.1511, 2nd Fanghu North Rd, Huli District, Xiamen, China

11